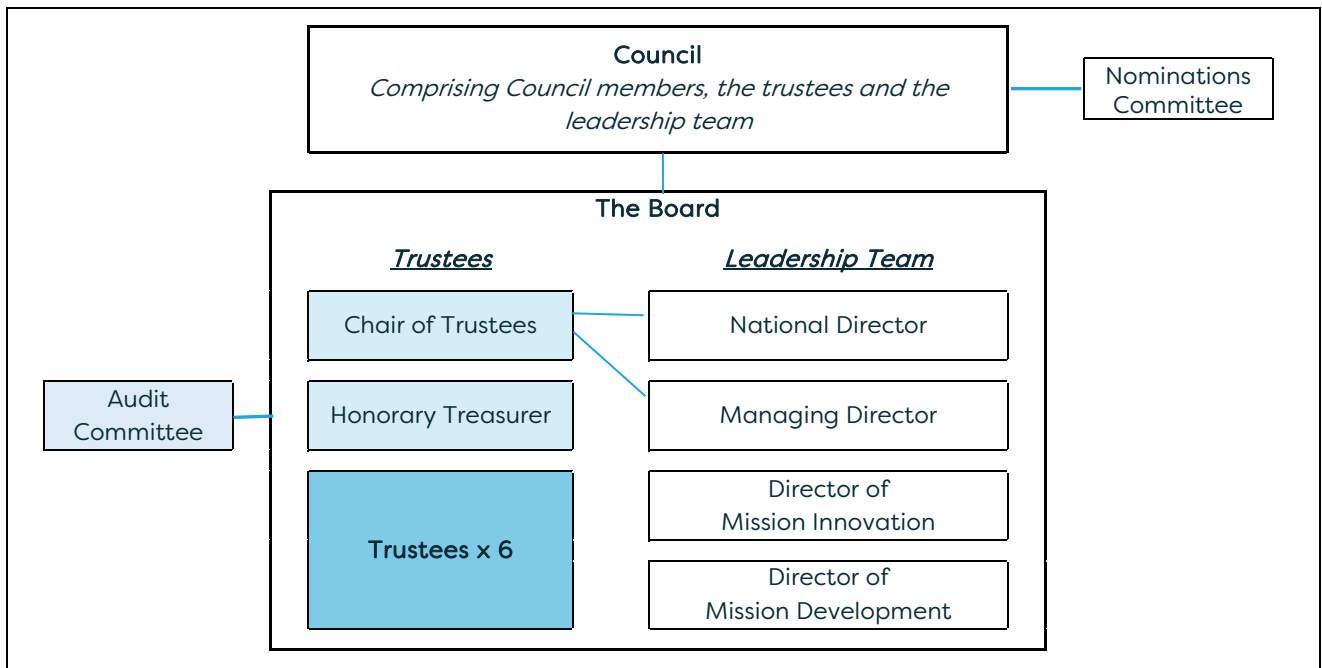




# Scripture Union

## Role profile - TRUSTEE



### About Scripture Union in England and Wales

Scripture Union is a Christian charity, inviting children and young people to explore the difference Jesus can make to the challenges and adventures of life.

Through a wide range of activities and initiatives, we provide opportunities for children and young people to explore the Bible, respond to Jesus and grow in faith. With an estimated 95% of children in England and Wales not part of a church, we're working harder than ever to take the good news of Jesus beyond the church in exciting and culturally relevant ways.

### Role Purpose

Under God's guidance, the Trustees are responsible for controlling the management and administration of the movement which will include:

- setting the vision
- strategic planning
- ensuring accountability to supporters and other stakeholders
- monitoring and evaluating the work
- public relations
- representation
- staff management

so that Scripture Union fulfils its ministry in ways which accord with its Aims, Belief and Working Principles.

Subject to the governing documents and the Charities Act, Trustees are accountable corporately and individually to their fellow Trustees. They are elected by and report to Scripture Union's Council.

The main functions of the trustees relate to

- Vision – including prayer, discernment, strategy, and ethos.
- Legal compliance – including governing document, charity law, company law, charitable objects, resources.

<b>Collective Responsibilities</b>
<ul style="list-style-type: none"> <li>• Encourage volunteers, staff and others to contribute to the development of Vision for the movement and to assist in discerning God's will for the future of the work.</li> <li>• Ensure that the movement complies with its governing document, charity law, company law, and all other relevant legislation or regulations.</li> <li>• Ensure that the movement pursues its charitable objects as defined in the Articles of Association.</li> <li>• Ensure that the movement applies its resources in furtherance of its objectives and that money is not spent on any activity which is not included in the objectives [no matter how worthwhile or charitable the activity may be].</li> <li>• Contribute actively to the Trustees' role of:               <ul style="list-style-type: none"> <li>• giving firm, strategic direction to the movement;</li> <li>• setting overall policy;</li> <li>• defining goals;</li> <li>• setting targets and evaluating performance against agreed targets.</li> </ul> </li> <li>• Safeguard the values, ethos and reputation of the movement.</li> <li>• Ensure that the movement is administered effectively and efficiently.</li> <li>• Ensure the financial stability of the movement.</li> <li>• Protect and manage the movement's property and to ensure the proper investment of funds.</li> <li>• Appoint and support the Leadership Team and to monitor their performance.</li> <li>• Use specific knowledge or experience to assist the Trustees to reach sound decisions and to provide advice and guidance to areas of the work in which the Trustee has special expertise.</li> </ul>
<b>Person specification</b>
<ul style="list-style-type: none"> <li>• A committed Christian in sympathy with and committed to the Aims of Scripture Union.</li> <li>• A person of integrity and spiritual discipline.</li> <li>• An understanding of the contribution that Scripture Union can make to the work of the Kingdom.</li> <li>• A broad experience of the Christian Church.</li> <li>• An understanding and acceptance of the legal duties, responsibilities and liabilities of trusteeship.</li> <li>• A willingness to devote the necessary time and effort to the duties of a Trustee including attending and contributing to meetings as well as reading necessary papers and documents.</li> <li>• Strategic vision along with good independent judgement, and an ability to think creatively.</li> <li>• The ability to work effectively as part of a team and to be able to communicate well at all levels.</li> <li>• A willingness to be innovative, controversial and outspoken when required.</li> <li>• A willingness to contribute to other aspects of Scripture Union's ministry and work.</li> </ul>
<b>Time commitment</b>
<p>The role requires attendance at four Board meetings each year, held on weekday afternoons. In addition, attendance is required at two Council meetings each year, held on Saturdays, and there are a limited number of supporting meetings along with the associated preparation.</p> <p>Trustees, who are also directors of the charity for the purposes of the Companies Act, are appointed for a three-year period and can serve a maximum of three consecutive terms of office. Ahead of making a decision about standing for reappointment, a review of the previous term of office is undertaken by the trustee and Scripture Union.</p>
<i>Date of last profile update: November 2019</i>