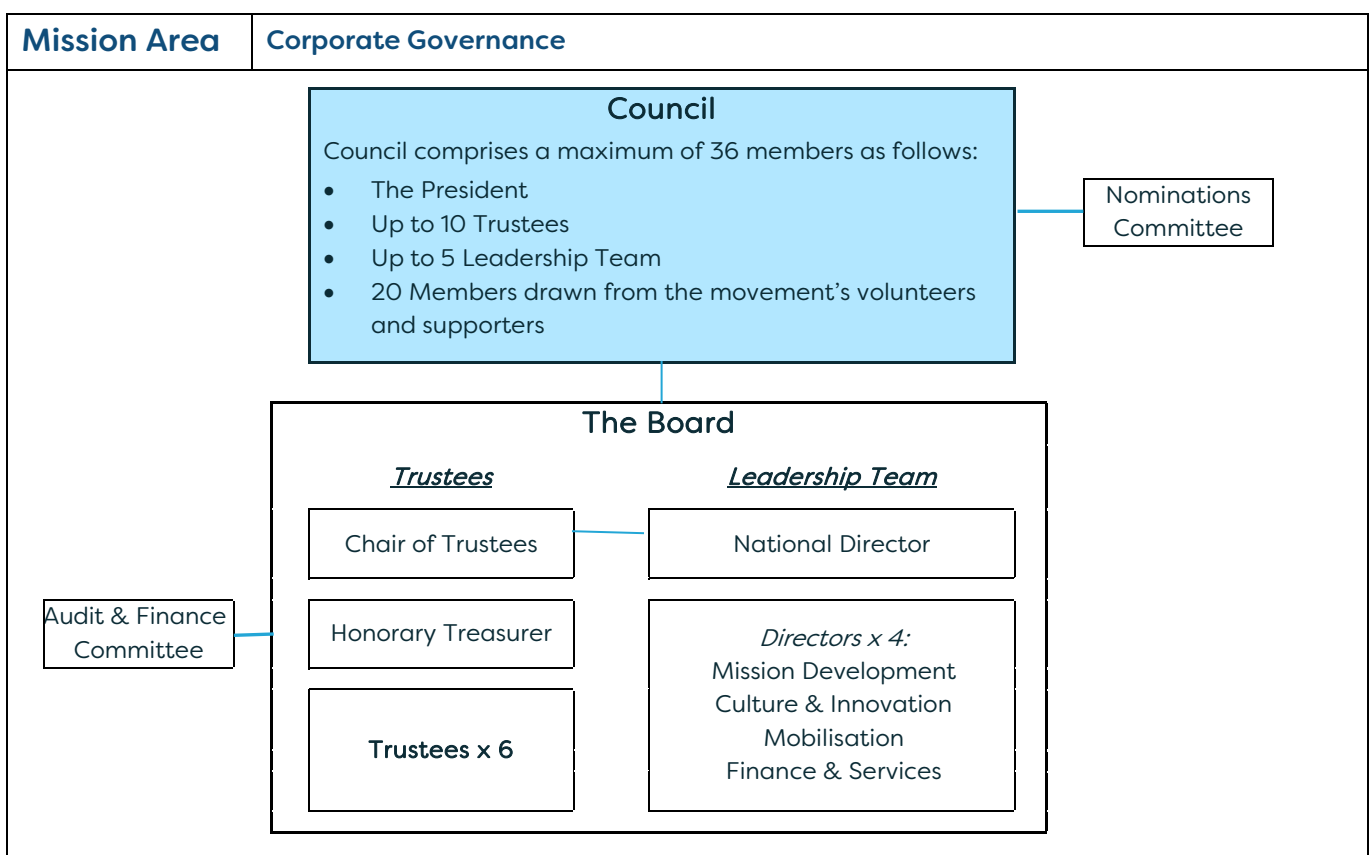




# Scripture Union

## Role profile – COUNCIL MEMBER



### About Scripture Union in England and Wales

We are a national mission movement and part of the global family of Scripture Union, united by our shared aims, beliefs and working principles. We aim to create opportunities for children and young people to explore the Bible, respond to Jesus and grow in faith. Our priority is to reach those who do not yet know Jesus. In all our work, we aim to care for children and young people, share God’s good news and offer choices and opportunities, whilst being credible, relevant and inspiring. Our vision is of a new generation of children and young people who have a vibrant, personal faith in Jesus.

### Role Purpose

Council is the over-arching body of the movement to provide a forum for development of spiritual vision and discernment of God’s leading.

### Membership and accountability

- Members of the Council comprise the membership of the movement are the Members of Scripture Union, the registered Company.
- Subject to the governing documents, Council members are accountable corporately and individually to their fellow Council members. The Council holds the Board to account.

### Collective Responsibilities

- To ensure that the Aims, Belief and Working Principles of the movement are applied across the movement.
- To contribute to the development of the long-term strategy of the movement, providing guidance and insight based on their general and/or specific experience of the movement.
- To review the progress made towards fulfilling the Movement Plan.
- As Members of Scripture Union, to elect non-staff Members of Council and to elect non-staff Members as Trustees, who, as directors of the Company, assume legal responsibility for the movement.

- To recommend to the Trustees the appointment of an Honorary President to preside at its meetings. The role of the Honorary President is to oversee the proceedings of Council and to be part of the advocacy of the movement.

### **Collective Activities**

- To encourage volunteers, staff and others to contribute to the Vision process of the movement and to assist in discerning God's will for the future of the work.
- To safeguard the values, ethos and reputation of the movement.
- To use specific knowledge or experience to assist the Trustees and Leadership Team to reach sound decisions.
- To act as an advocate for the SU region in which they live and/or for their area of expertise/mission involvement with the movement.
- To communicate on behalf of the Council to the SU region in which they live and/or volunteer within their area of expertise/mission involvement with the movement.
- To use the information they receive to seek prayerfully God's blessing on and protection of the movement.

### **Person specification**

- A committed Christian in sympathy with and committed to the aims and ethos of Scripture Union.
- A person of integrity and spiritual discipline.
- An understanding of the contribution that Scripture Union can make to the work of the Kingdom.
- A broad experience of the Christian Church.
- A person possessing good judgement and independence of mind.
- An understanding of the missional needs and context of at least one specific mission area requiring representation by Council members.
- A willingness to be innovative, controversial and outspoken when required whilst seeking constructive debate and dialogue over confrontation.
- A willingness to work collectively as part of a group and be able to communicate well at all levels.
- A willingness to contribute to other aspects of Scripture Union's mission and work, including involvement in mission development projects when necessary.
- A willingness and ability to devote the necessary time and effort required of the role.

### **Meetings and time commitment**

- Council meets twice a year, normally on a Saturday and in a central location. Members are expected to prepare for and attend each Council meeting.
- The agenda will typically focus on a major issue affecting the movement and may review the implications by functions and mission stream within specialist groups.
- The autumn meeting will normally include the Annual meeting.
- Members are encouraged to attend other Scripture Union meetings relevant to their area(s) of involvement within the Scripture Union movement and/or expertise.
- Members are elected at the Annual Meeting or by electronic vote. Appointment is for a three-year period and the Member can serve a maximum of three consecutive terms of office. Ahead of making a decision about standing for reappointment, a review of the previous term of office is undertaken by the Member and Scripture Union.
- Service as a member of a governance committee comprises part of the maximum term of membership.
- Following retirement or resignation as a Council member, re-appointment is possible after the lapse of at least one year.

*Date of last profile update: February 2019*